

LE KLINT Le Klint Shibui Pendant

LA10428

SOURCE: <https://www.davidvillagelighting.co.uk/product/Le-Klint-Shibui-Pendant/10000092>



PRODUCT DESCRIPTION

Designer: Søren Refsgaard

Le Klint Shibui Pendant

The Le Klint Shibui pendant was designed by Søren Refsgaard, who embodies the design aesthetic of Le Klint by creating a folded lampshade made from white plastic foil. Refsgaard is heavily influenced by Scandinavian design, putting functionality and simplicity at the forefront of his creations. This pendant light is no exception as the beautiful white shade has clear and striking lines, matched with a simple black metal ring.

The Shibui pendant lamp is available in 3 sizes, small, medium and large, and can be used in homes, professional spaces or commercial settings. The larger pendants could be used as a central light, and the smaller pendant lights are useful for rows or cluster compositions. The pendant creates a wonderful diffused glow, which is warming and inviting, perfect for creating a welcoming ambience.

PRODUCT SPECIFICATION

Light Source: 1 x Max 20W E27 LED (Excluded)

IP Code: 21

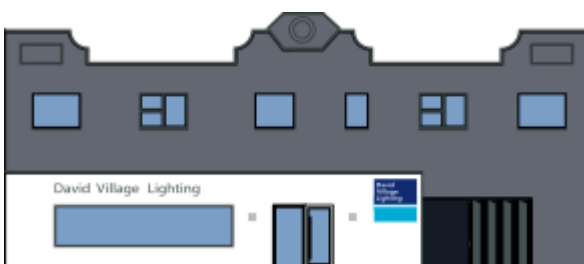
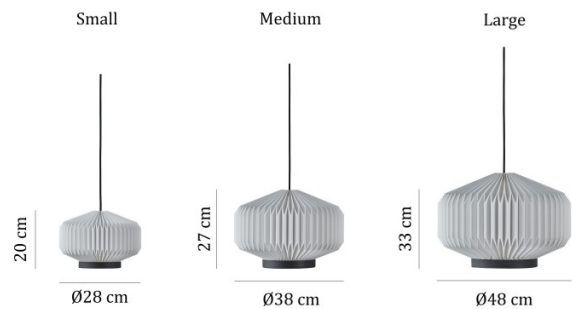
Dimming: Dimmable via mains phase dimming.

Dimensions: Small:
 Ø28cm
 Height: 20cm

Medium:
 Ø38cm
 Height: 27cm

Large:
 Ø48cm
 Height: 33cm

Cable Length: 300cm



For all sales and technical enquiries, please contact:

+44 (0)114 263 4266

info@davidvillagelighting.co.uk

www.davidvillagelighting.co.uk