

marset

Marset Ambrosia LED Suspension

LA10462

SOURCE: <https://www.davidvillagelighting.co.uk/product/Marset-Ambrosia-LED-Suspension/10000208>

PRODUCT DESCRIPTION

Designer: Ciszak Dalmas

Marset Ambrosia LED Suspension Light

Marset Ambrosia LED Suspension Light is the central linear pendant in the Ambrosia collection by Ciszak Dalmas. Originally inspired by the traditional Lincestra lamp, Ambrosia turns a simple tube of light into a more refined suspension system, with an aluminium structure and methacrylate light tube. It keeps the clarity of a strip light, but gives it a more considered shape for homes, hospitality spaces, and commercial interiors.

The suspension version is a good fit for tables, counters, and kitchen islands where one long fitting will work better than a row of smaller pendants. The shorter lengths suit homes and smaller dining areas. The larger sizes are more useful over long tables, shared workspaces, and hospitality settings where the light needs to cover more of the surface.

Ambrosia Suspension is a good choice where a room needs an even line of light rather than a cluster of separate pendants. It can make a dining table feel more settled, give a kitchen island a cleaner rhythm, or bring a softer line across a restaurant or hotel interior. The slim profile keeps the view across the room open, so the light can do its job without taking over the space.



PRODUCT SPECIFICATION

Light Source: **Ambrosia 120:** 19.2W, 2200K/2700K/3000K, 2116/2028/2256 Lumens
Ambrosia 180/210: 28.8W, 2200K/2700K/3000K, 3174/3042/3384 Lumens
Ambrosia 315: 43.2W, 2200K/2700K/3000K, 4761/4563/5076 Lumens

IP Code: 20

Dimming: **Triac:** Dimmable using leading edge (Triac).
Dali: Dimmable via Dali dimming systems. Please consult your electrician, additional wiring may be required on site.

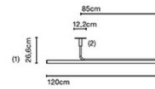
Dimensions: Ambrosia 120:
Length: 120cm
Height: 26.6cm

Ambrosia 180:
Length: 180cm
Height: 26.6cm

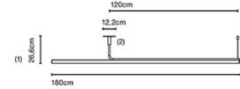
Ambrosia 210:
Length: 210cm
Height: 26.6cm

Ambrosia 315:
Length: 315cm
Height: 26.6cm

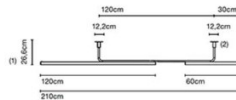
Ambrosia 120



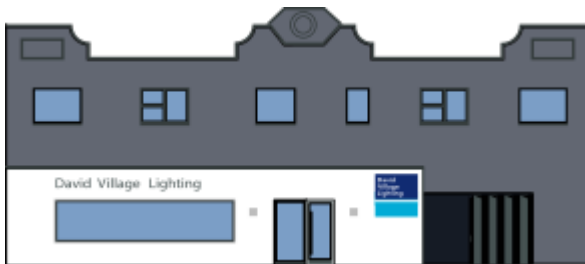
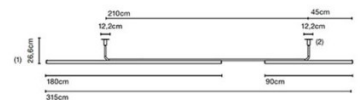
Ambrosia 180



Ambrosia 210



Ambrosia 315



For all sales and technical enquiries, please contact:

+44 (0)114 263 4266

info@davidvillagelighting.co.uk

www.davidvillagelighting.co.uk