

**marset****Marset Ambrosia LED Wall Light**

LA10462/W

SOURCE: <https://www.davidvillagelighting.co.uk/product/Marset-Ambrosia-LED-Wall-Light/10001683>**PRODUCT DESCRIPTION****Designer:** Ciszak Dalmas**Marset Ambrosia LED Wall Light**

Marset Ambrosia LED Wall Light is a slim linear wall light by Ciszak Dalmas, developed from the idea of updating the traditional Linessra strip light. Its aluminium structure and methacrylate light tube give the wall a clean, diffused line of illumination, without the bulk of a more conventional wall fitting. The design feels simple at first glance, but it has enough presence to work as part of a wider lighting scheme.



The wall version can be fitted horizontally or vertically, which gives it more flexibility than a standard picture light or bedside wall light. Used horizontally, it can sit above a sideboard, along a corridor, or beside a dining area. Mounted vertically, it works well beside a mirror, near a doorway, or as a repeated detail through a hallway. Black gives a stronger outline on the wall, while Matt Gold feels warmer and a little softer.

Ambrosia Wall is useful where a room needs light across a surface, rather than a single point of brightness. It can sit quietly in bedrooms and living rooms, but also has enough structure for restaurants, hotels, and reception spaces. The 60cm and 90cm lengths make it easy to scale the fitting to the wall, from smaller domestic areas to longer runs of lighting in commercial interiors.

**Please Note: The Marset Ambrosia LED Wall Light is also available with Dali dimming, alternative colour temperature options, and a larger 210cm size. Please [contact us](#) for more information and pricing.**

## PRODUCT SPECIFICATION

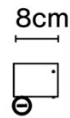
**Light Source:** **Ambrosia 60:** 9.6W, 3000K, 1028 Lumens  
**Ambrosia 90:** 14.4W, 3000K, 1692 Lumens

**IP Code:** 20

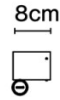
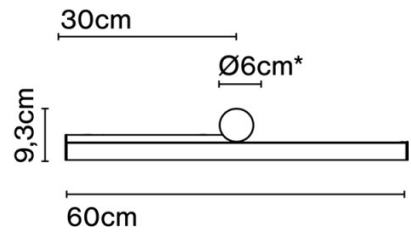
**Dimming:** Dimmable via Triac dimming.

**Dimensions: Ambrosia 60:**  
Length: 60cm  
Width: 9.3cm  
Depth: 8cm  
Wall Mount Length: 30cm

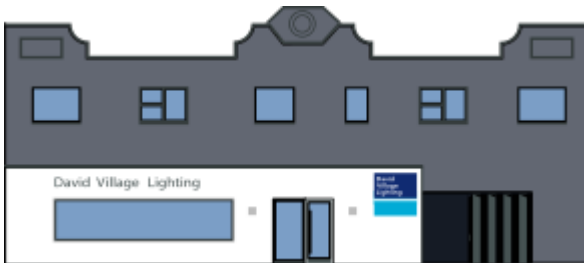
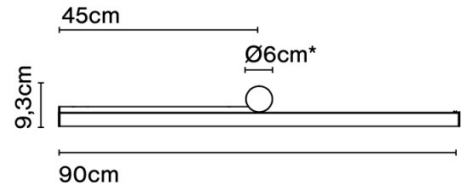
**Ambrosia 90:**  
Length: 90cm  
Width: 9.3cm  
Depth: 8cm  
Wall Mount Length: 45cm



### Ambrosia 60



### Ambrosia 90



**For all sales and technical enquiries, please contact:**

+44 (0)114 263 4266

[info@davidvillagelighting.co.uk](mailto:info@davidvillagelighting.co.uk)

[www.davidvillagelighting.co.uk](http://www.davidvillagelighting.co.uk)