

marset

Marset Aura On/Off LED Wall Light

LA4332/DALI

SOURCE: <https://www.davidvillagelighting.co.uk/product/Marset-Aura-OnOff-LED-Wall-Light/10002443>

PRODUCT DESCRIPTION

Designer: Joan Gaspar

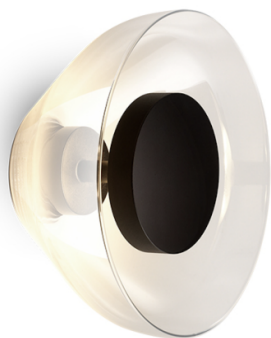
Marset Aura On/Off LED Wall Light

Marset Aura On/Off LED Wall Light is a hardwired wall light with a blown glass shade and integrated warm LED light source. Designed by Joan Gaspar, Aura has a simple circular form that sits close to the wall, giving a soft wash of light through the glass shade. The fitting is compact in depth, making it useful in spaces where a decorative wall light needs to stay relatively neat against the surface.

The shade is available in Transparent, Opal, Transparent Smoked, Copper, and Violet finishes. Most versions use a black structure, while the Opal version is supplied with a white structure. Transparent and Opal give the light a cleaner look, while Transparent Smoked, Copper, and Violet add more colour and depth to the fitting when seen on the wall.

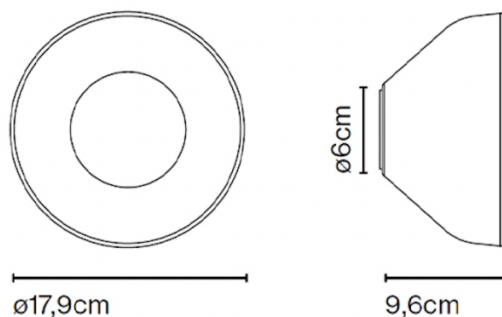
This On/Off version is non-dimmable and is designed for hardwired installation. The integrated LED gives a warm 2700K light, suitable for adding ambient wall lighting in hallways, bedrooms, living rooms, dining spaces, and hospitality interiors. Its shallow rounded shape makes Aura easy to use in pairs, repeated along a corridor, or placed as a single decorative wall light beside furniture or architectural details.

This version of the Marset Aura Wall Light utilises Dali dimming and comes supplied with the appropriate driver.



PRODUCT SPECIFICATION

Light Source:	10W, 2700K, 1038 Lumens
IP Code:	20
Dimming:	Dimmable via Dali dimming systems. Please consult your electrician; additional wiring may be required.
Dimensions:	Shade: Ø17.9cm Depth: 9.6cm Wall Mount: Ø6cm





For all sales and technical enquiries, please contact:

+44 (0)114 263 4266

info@davidvillagelighting.co.uk

www.davidvillagelighting.co.uk