

pholc

Pholc Lille 24 Pendant

LA11309

SOURCE: <https://www.davidvillagelighting.co.uk/product/Pholc-Lille-24-Pendant/10002493>



PRODUCT DESCRIPTION

Designer: Anne Dorthe Vester

Pholc Lille 24 Pendant

The Pholc Lille Pendant was designed by Anne Dorthe Vester, who is known for her minimalistic approach, and released in 2025. Available in a range of finishes, from a more muted raw aluminium to a bold, vibrant green or red-orange, the Lille 24 Pendant is a beautiful addition to a range of residential and commercial spaces.

Compact and subtle, with a sculptural presence, this modern luminaire features a geometric silhouette and is fitted with layered surfaces and fine, laser-cut lines that assist in the diffusion of the inner light source. The result is an intricate ambient lighting solution that projects a warm, glare-free glow onto the area below. For this reason, the Pholc Lille 24 Pendant can be used in a variety of settings, but makes a statement over dining tables and kitchen islands, whether used in repeat or as a single piece.

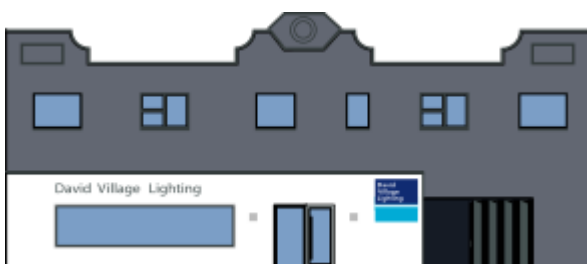
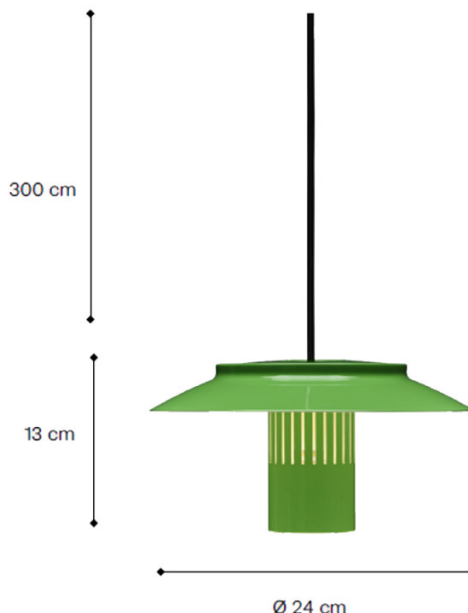
PRODUCT SPECIFICATION

Light Source: 1 x Max 10W GU10 Dimmable (Excluded)

IP Code: 20

Dimming: Dimmable via mains phase dimming.

Dimensions: Shade: Ø24cm
Shade Height: 13cm
Cable Length: 300cm



For all sales and technical enquiries, please contact:

+44 (0)114 263 4266

info@davidvillagelighting.co.uk

www.davidvillagelighting.co.uk