

**Tom  
Dixon.**

LA11397

# Tom Dixon Whirl LED Outdoor Lamp

SOURCE: <https://www.davidvillagelighting.co.uk/product/Tom-Dixon-Whirl-LED-Outdoor-Lamp/10002600>

## PRODUCT DESCRIPTION

**Designer:** Tom Dixon

### Tom Dixon Whirl LED Outdoor Lamp

Created by Tom Dixon, the Whirl LED Outdoor Lamp is inspired by the popular Optical Art movement. The spiralled shade reflects the distorted and manipulated patterns often seen in Op Art, creating a captivating illusion that is as decorative off as it is when switched on. Each shade includes a tripod base and an easy-to-use hanging strap, giving you freedom to choose how and where to display this piece. Its portability allows you to easily move the lamp wherever you need soft and welcoming lighting. With an IP rating of 44, the Whirl LED Outdoor Lamp is splash-proof, suitable for both indoor and outdoor use.

Each shade is blow-moulded in a state-of-the-art factory in Germany. The vacuum metallisation process deposits a thin layer of metal on the interior of the shade to offer a semi-metallised finish. This metallic finish is available in two bold colourways, Silver and Gold. When illuminated, the spirals transform light from within, reflecting it into a myriad of abstract patterns. The shade diffuses light into a glare-free glow that adds a warm and ambient glow to the room. An integrated dimmer offers a three-step dimming process to personalise the lighting output depending on the ambience required. The portability of the Whirl Outdoor Lamp makes it a suitable lighting solution for use throughout the home, adding a warm ambience to bedrooms, reading nooks, lounge areas, or outdoors.

**Please Note: Each Tom Dixon Melt Outdoor includes one blow-moulded shade, one floor stand, and one strap for hanging.**



## PRODUCT SPECIFICATION

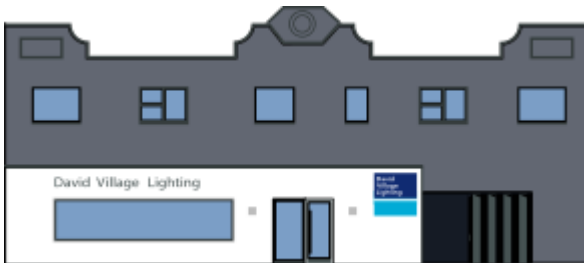
**Light Source:** 4.5W, 3000K, 500 Lumens

**IP Code:** 44

**Dimming:** Integrated dimmer on the product.

**Dimensions:** Shade Height: 40cm  
Height on Base: 54cm  
Width: 45cm

Charging Cable Length: 200cm



**For all sales and technical enquiries, please contact:**

+44 (0)114 263 4266

[info@davidvillagelighting.co.uk](mailto:info@davidvillagelighting.co.uk)

[www.davidvillagelighting.co.uk](http://www.davidvillagelighting.co.uk)