



Audo Copenhagen Tubulaire Rail Pendant

LA11400/RP

SOURCE: <https://www.davidvillagelighting.co.uk/product/Audo-Copenhagen-Tubulaire-Rail-Pendant/10002608>



PRODUCT DESCRIPTION

Designer: Kroyer-Saetter-Lassen

Audo Copenhagen Tubulaire Rail Pendant

A linear solution for islands, bars and worktables, the Tubulaire Rail Pendant arranges three or five reeded aluminium pendants along a slim rail for even, focused light. The bronzed anodised finish softens the technical character, bringing warmth to contemporary kitchens and hospitality counters while keeping glare low and task visibility high.

With matching single pendants, clusters and chandeliers in the family, you can build a complete scheme that shares the same material language. Specify warm GU10 lamps for dining comfort or cooler lamps for worktops, then align to furniture below for a clean, proportionate composition.

PRODUCT SPECIFICATION

Light Source: Rail 3: 3 x Max 35W GU10 (Excluded)
Rail 5: 5 x Max 35W GU10 (Excluded)

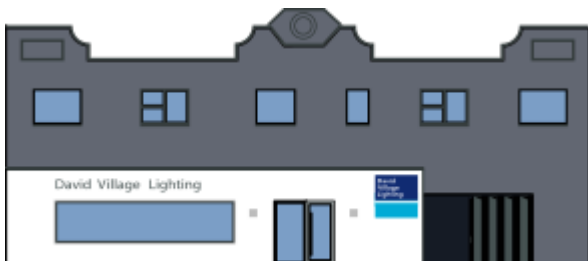
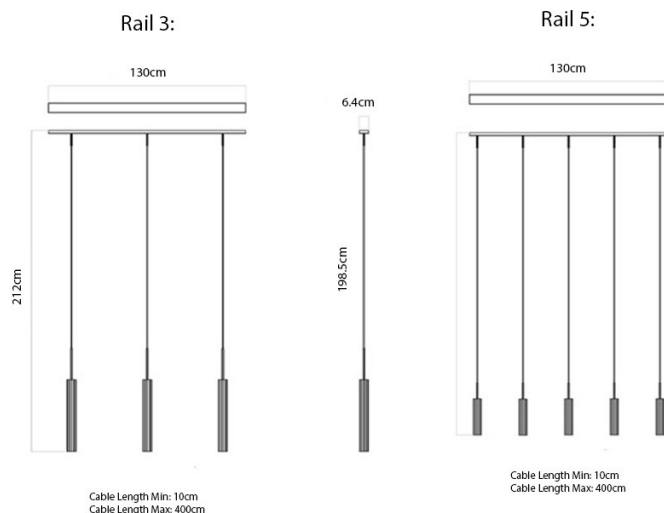
IP Code: 20

Dimming: Dimmable via mains phase dimming.

Dimensions: Rail 3:
Shade: Ø5.6cm
Canopy Length: 130cm
Canopy Width: 6.4cm

Rail 5:
Shade: Ø5.6cm
Canopy Length: 130cm
Canopy Width: 6.4cm

Cable Length (Adjustable): 10-400cm



For all sales and technical enquiries, please contact:

+44 (0)114 263 4266

info@davidvillagelighting.co.uk

www.davidvillagelighting.co.uk