

Artemide

LA11437

Artemide Somnium Stand Alone LED Suspension Light

SOURCE: <https://www.davidvillagelighting.co.uk/product/Artemide-Somnium-Stand-Alone-LED-Suspension-Light/10002680>

PRODUCT DESCRIPTION

Designer: Carlotta de Bevilacqua

Artemide Somnium Stand Alone LED Suspension

The Artemide Somnium Stand Alone is an architectural LED suspension light from Artemide, designed to deliver high comfort illumination in calm, minimal forms. Advanced optics are engineered to achieve UGR<16 for low-glare environments, and the lens and anti-glare louvre are treated as an integral structural element rather than an add-on, keeping the light output controlled and visually clean. The result is a precise direct emission that supports task areas, paired with an indirect component that softens the ceiling plane and improves the overall feel of the space.

Available in linear and circular formats across multiple sizes. Performance is positioned as high efficiency supporting specification where output and responsible consumption both matter. It is suitable for meeting tables, open plan workspaces, reception areas and modern hospitality settings where glare control and consistency are key.

Please note, this product is also available in 4000K and with Artemide App dimming compatibility. [Contact us](#) for pricing and information.

PRODUCT SPECIFICATION

Light Source: **Circular 832:** 27W, 3000K, 4452 Lumens
Circular 1100: 36W, 3000K, 5936 Lumens
Linear 1260: 20W, 3000K, 3287 Lumens
Linear 1680: 27W, 3000K, 4383 Lumens
Linear 2100: 34W, 3000K, 5479 Lumens

IP Code: 20

Dimming: Compatible with Dali and Push to Make. Please consult your electrician, additional wiring may be required on site.

Dimensions: **Circular 832:**
Diameter: 83.2cm

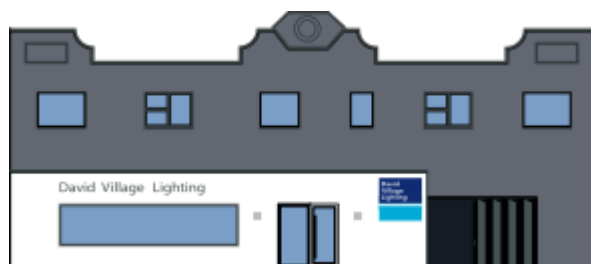
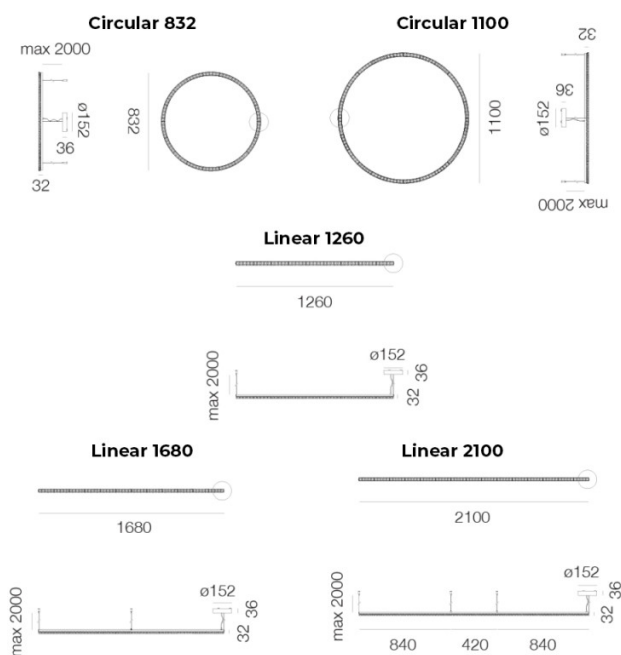
Circular 1100:
Diameter: 110cm

Linear 1260:
Length: 126cm

Linear 1680:
Length: 168cm

Linear 2100:
Length: 210cm

Cable Length: 200cm (Max)



For all sales and technical enquiries, please contact:

+44 (0)114 263 4266

info@davidvillagelighting.co.uk

www.davidvillagelighting.co.uk