



&Tradition Utzon JU1 Pendant

LA6940

SOURCE: <https://www.davidvillagelighting.co.uk/product/Tradition-Utzon-JU1-Pendant/13994>

PRODUCT DESCRIPTION

Designer: Jørn Utzon

Utzon JU1 Pendant Light by &Tradition

The Utzon JU1 Pendant is one of [&Tradition's](#) most iconic designs. An early design by Danish architecture legend Jørn Utzon, the Utzon Pendant is typical of his work with both buildings and interiors. Thanks to his father's naval engineering drawings, Utzon developed a lifelong fascination with the shapes of the nautical world, and in particular with the way that light interacts with these shapes. This fascination is especially apparent in the design of his 1957 masterpiece, the Sydney Opera House, but ten years earlier, it figured prominently in the shape of this pendant, which resembles a lighthouse, a series of waves, and the sails of a ship.

Much like his opera house, Utzon's [pendant](#) consists of several concentric panels which play with light and shadow, in this case a set of elegant, angled lines which encourage light to move up, down, and out into the space around it. These metal panels are created by expert craftsmen using a combination of deep drawing and spinning to ensure a smooth, uniform appearance, as stylish today as it was when Utzon first dreamt it up. The Utzon JU1 is available in various colours. A single pendant makes for a perfect mood light in a small seating area, but combining several to set the tone for an entire room.

To commemorate the 50th Anniversary of the completion of the Sydney Opera House, &Tradition has released a special edition of the Utzon Pendant in Blue Steel. The colour of this addition to the collection is a favourite shade of Utzon's, seen in many examples of his architectural work, including the Sydney Opera House. The Blue Steel also references the hue of the water surrounding the Sydney Opera House.



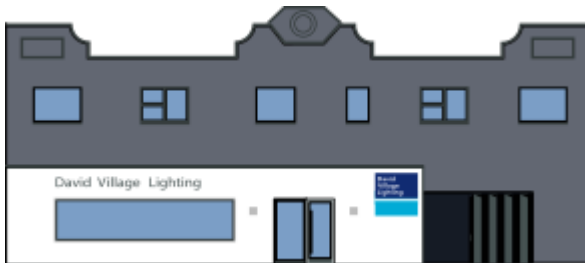
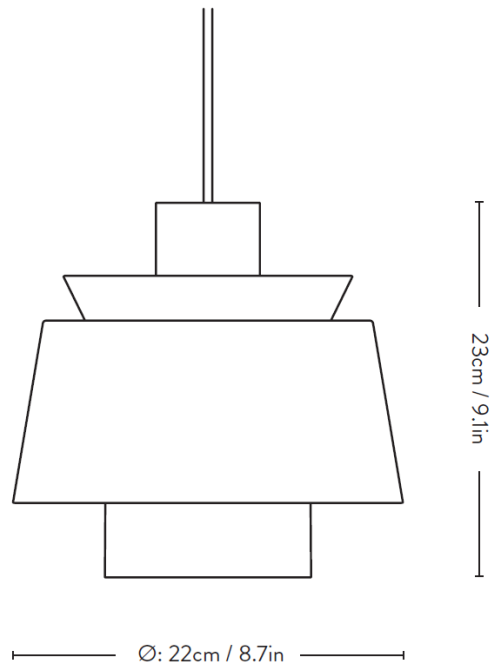
PRODUCT SPECIFICATION

Light Source: 1 x Max 8.5W LED E27 (excluded)

IP Code: 20

Dimming: Dimmable via mains phase dimming.

Dimensions: Shade: Ø22cm
Shade Height: 23cm
Cable Length: 3m



For all sales and technical enquiries, please contact:

+44 (0)114 263 4266

info@davidvillagelighting.co.uk

www.davidvillagelighting.co.uk