

louis poulsen

Louis Poulsen PH 3½-2½ Table Lamp

LA3614

SOURCE: <https://www.davidvillagelighting.co.uk/product/Louis-Poulsen-PH-3-2-Table-Lamp/16235>

PRODUCT DESCRIPTION

Designer: Poul Henningsen

Louis Poulsen PH 3½-2½ Table Lamp

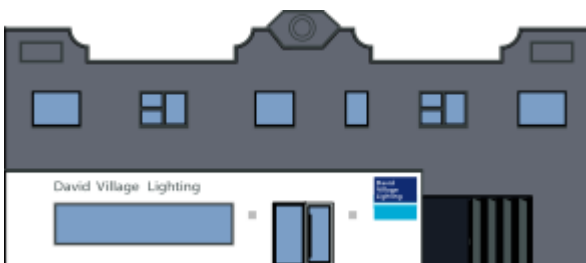
The PH 3½ - 2½ Table Lamp is based on Poul Henningsen's design from 1928, which uses his legendary 3 shade system that diffuses and optimises the light source. This table lamp updates the original design as the top shade is made from metal with 4 colour finishes for you to choose from. The bottom 2 shades are made from white opal glass, creating a pleasant, soft glow that will create a comfortable atmosphere.

The PH 3½ - 2½ Table Light retains all the stunning qualities of the original, with the structure made from brown painted brass to resemble the original burnished brass lamps from the 20s era. This table light can be used in a wide variety of settings, such as bedrooms, offices, lounges and reception areas and will add a touch of class and refinement to any space.



PRODUCT SPECIFICATION

- Light Source:** 1 x Max 6W E14 LED (Excluded)
- IP Code:** 20
- Dimming:** In-line on/off switch included on cable.
- Dimensions:** Shade: Ø33cm
Height: 45cm
Cable Length: 250cm



For all sales and technical enquiries, please contact:

+44 (0)114 263 4266

info@davidvillagelighting.co.uk

www.davidvillagelighting.co.uk