

Artemide

Artemide Vitruvio Pendant

LA6047

SOURCE: <https://www.davidvillagelighting.co.uk/product/Artemide-Vitruvio-Pendant/20150>



PRODUCT DESCRIPTION

Designer: Atelier Oi

Artemide Vitruvio Pendant

The Artemide Vitruvio Pendant is an ingenious integration of two opposing elements: a metal supporting frame and a delicate-looking glass shade, which cocoons the metal rod. This interplay of materials results in an expressive luminaire that adds a touch of elegance to any interior. The glass shade features embossed horizontal stripes, which conceal the light source to reduce glare while creating a soft, even light distribution.

The Vitruvio Pendant is available in two finishes: brass with transparent glass, or black with smoked glass. Its ornate aesthetic adds a poetic presence to the room, perfect for creating a sense of calm. Display in a living room, bedroom, or lounge area as an eye-catching addition that creates a cosy and inviting ambience. In commercial spaces, the Vitruvio complements hospitality and retail settings.

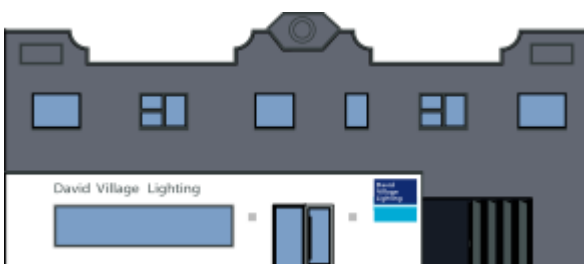
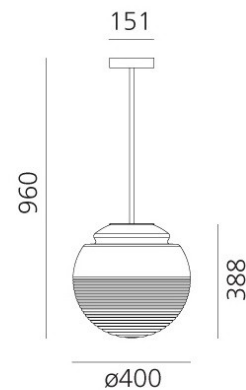
PRODUCT SPECIFICATION

Light Source: 1 x Max 21W E27 LED (Excluded)

IP Code: 20

Dimming: Dimmable via mains phase dimming.

Dimensions: Ø40cm
Shade Height: 38.8cm
Ceiling Canopy: Ø15.1cm
Drop Height: 96cm



For all sales and technical enquiries, please contact:

+44 (0)114 263 4266

info@davidvillagelighting.co.uk

www.davidvillagelighting.co.uk