

LODES

LA10219

## Lodes Kelly Cluster Sphere LED Trio

SOURCE: <https://www.davidvillagelighting.co.uk/product/Lodes-Kelly-Cluster-Sphere-LED-Trio/20643>

### PRODUCT DESCRIPTION

**Designer:** Andrea Tosetto

### Lodes Kelly Cluster Sphere Trio

Part of the [Lodes Kelly Collection](#), the Kelly Cluster Sphere Trio comprises three pendants arranged in a cluster. With a diameter of 18cm, these pendants are a compact version of the [Kelly Sphere Pendant](#). The patterns throughout each sphere are achieved through a process of laser-cutting, which gives the collection its sense of lightness and vibrancy. When illuminated, the Kelly Cluster creates an intriguing play of light and shadow, perfect for adding a scenic effect and welcoming atmosphere in any space.

The Kelly Cluster Sphere Trio is available in four sophisticated finishes: Coppery Bronze, Matte Black, Matte White, or Matte Champagne. The spherical pendants house an integrated LED and a semi-transparent glass diffuser for soft, glare-free lighting. Create an intriguing display in a stairwell, bedroom, or above a dining table. Alternatively, in commercial spaces, large installations can be created for an eye-catching display that is guaranteed to leave a lasting impression.

While the Kelly Cluster is supplied with a white ceiling canopy, a black canopy is also available. [Contact us](#) for more information and pricing.

**The Kelly Cluster is available to buy online as a cluster of 3 pendants in either a Matte White, Matte Black, Matte Champagne or Coppery Bronze finish. For a cluster which uses a combination of the four colours or uses more than 3 pendants, please [contact us](#).**



## PRODUCT SPECIFICATION

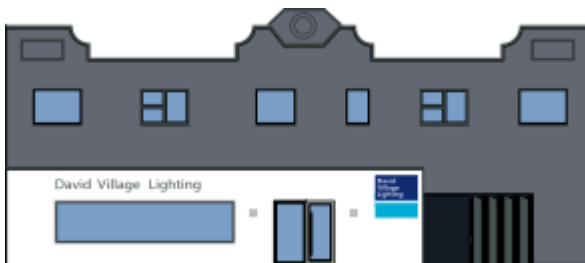
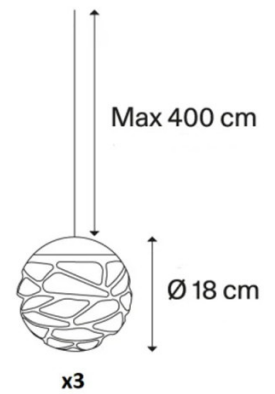
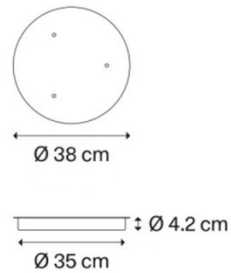
**Light Source:** 3 x 7W, 2700K, 1280 Lumens

**IP Code:** 40

**Dimming:** Dimmable via Triac dimming.

**Dimensions:** Ø18cm  
Ceiling Canopy: Ø38cm  
Ceiling Canopy Depth: 4.2cm  
Maximum Drop: 400cm

**Ceiling Canopy**



**For all sales and technical enquiries, please contact:**

+44 (0)114 263 4266

[info@davidvillagelighting.co.uk](mailto:info@davidvillagelighting.co.uk)

[www.davidvillagelighting.co.uk](http://www.davidvillagelighting.co.uk)