

Kartell

Kartell E' Wall Light

LA8380

SOURCE: <https://www.davidvillagelighting.co.uk/product/Kartell-E-Wall-Light/5050>



PRODUCT DESCRIPTION

Designer: Ferruccio Laviani

E' Wall Light by Kartell

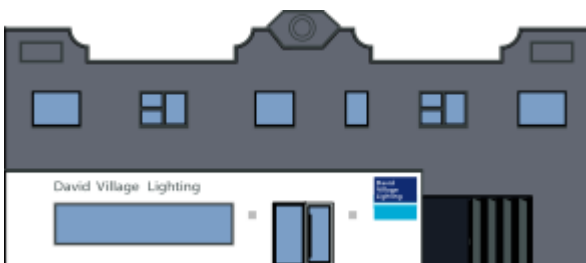
The E' wall sconce was designed by Ferruccio Laviani as part of the [E' collection](#) for Kartell. A simple wall light with just the essential lines and shapes, the lampshade is made of pleated poly-carbonate with an 11cm chrome steel arm and rosette.

The E' Wall Light is available in transparent colours of crystal, rose yellow, light blue and green and in matte solid white or black. The wall light is very versatile and can be used as either a cosy lighting option or can be mixed and matched with the [E' Pendant](#) light to create a colourful and dynamic touch for your room.

The lampshade is made of polycarbonate 2.0 from transparent or mass-dyed renewable raw material as part of Kartell Loves the Planet, their sustainability initiative.

PRODUCT SPECIFICATION

- Light Source:** 1 x 5W E14 LED (included)
- IP Code:** 20
- Dimming:** Dimmable via mains phase dimming.
- Dimensions:** Ø 13.5 cm
24 cm
Depth: 17cm



For all sales and technical enquiries, please contact:

+44 (0)114 263 4266

info@davidvillagelighting.co.uk

www.davidvillagelighting.co.uk