

louis poulsen

Louis Poulsen PH 4½-4 Glass Pendant

LA8480

SOURCE: <https://www.davidvillagelighting.co.uk/product/Louis-Poulsen-PH-4-4-Glass-Pendant/5386>



PRODUCT DESCRIPTION

Designer: Poul Henningsen

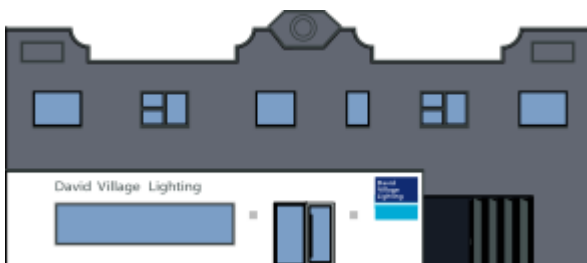
Louis Poulsen PH 4½-4 Glass Pendant Light

The PH 4½-4 Glass Pendant has a lampshade design based on a logarithmic spiral, which works to conceal the light source and create a glare-free and even glow throughout the room. This design was first created by Poul Henningsen in the 1920s, whose 3-shade system has now been used for many different models throughout the decades.

The Louis Poulsen PH 4½-4 Glass Pendant was first introduced in 1980 and is a perfect choice for all of your lighting needs. This luminaire provides both direct and overall illumination that can be used for many functions in your interior. Use as a main light or buy multiple to put in rows to hang over tables. Suitable for homes or commercial spaces, this pendant will add an elegant and functional touch to the room.

PRODUCT SPECIFICATION

- Light Source:** 1 x Max 15W E27 LED (Excluded)
- IP Code:** 20
- Dimming:** Dimmable via mains phase dimming.
- Dimensions:** Shade: Ø45cm
Shade Height: 41cm
Cable Length: 300cm



For all sales and technical enquiries, please contact:

+44 (0)114 263 4266

info@davidvillagelighting.co.uk

www.davidvillagelighting.co.uk