

louis poulsen

Louis Poulsen PH Snowball Pendant

LA8484

SOURCE: <https://www.davidvillagelighting.co.uk/product/Louis-Poulsen-PH-Snowball-Pendant/5389>



PRODUCT DESCRIPTION

Designer: Poul Henningsen

Louis Poulsen PH Snowball Pendant Light

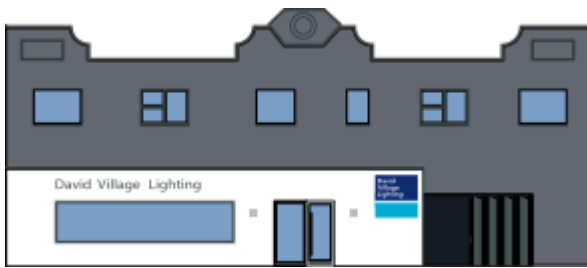
The Louis Poulsen PH Snowball Pendant was first designed in 1958 by Poul Henningsen and was exhibited at the Danish Museum of Decorative Art. Finding little success on its initial release, the pendant was shelved, being manufactured and relaunched in 1983. The luminire is made from 8 shades structured into a rounded shape that is intriguing and alluring, and protects the inner light source to ensure a glare-free illumination.

The PH Snowball Pendant Light has a subtle white finish, making it perfect for many design schemes and allowing it to adapt to a variety of spaces. The pendant lamp can be used in many settings, bedrooms, lounges, kitchens and more to create a warm ambience and an effective, even glow. No matter where it is displayed the PH Snowball is guaranteed to make a statement thanks to its unique silhouette.

PRODUCT SPECIFICATION

- Light Source:** 1 x Max 12W E27 LED (Excluded)
- IP Code:** 20
- Dimming:** Dimmable via mains phase dimming.
- Dimensions:** Shade: Ø40cm
Shade Height: 39cm
Cable Length: 400cm





For all sales and technical enquiries, please contact:

+44 (0)114 263 4266

info@davidvillagelighting.co.uk

www.davidvillagelighting.co.uk