

louis poulsen

Louis Poulsen Panthella 400 Table Lamp

LA8487

SOURCE: <https://www.davidvillagelighting.co.uk/product/Louis-Poulsen-Panthella-400-Table-Lamp/5434>

PRODUCT DESCRIPTION

Designer: Verner Panton

Louis Poulsen Panthella 400 Table Lamp

A part of the [Louis Poulsen Panthella collection](#), the Panthella 400 Table Lamp was first designed in 1971 by the iconic Verner Panton. Taking inspiration from nature and organic shapes, like in many of his designs, Panton has created a table lamp that has a beautiful semi-spherical shade and curved lines.

The table light is made to be reflective, reflecting the light from both the shade and the stem and base to create a warm yet effective glow. The lamp can be used on tables, side tables, shelves and desks in many different spaces in both homes and work settings. The vintage design is still contemporary and modern looking today, making the Panthella table light a perfect choice for timeless and functional design for your interior.



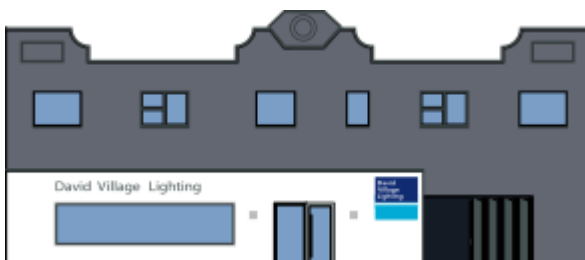
PRODUCT SPECIFICATION

Light Source: 1 x Max 8W E27 LED (Excluded)

IP Code: 20

Dimming: In-line on/off switch included on cable.

Dimensions: Shade: Ø40cm
Height: 55cm
Base: Ø25cm
Cable Length: 250cm



For all sales and technical enquiries, please contact:

+44 (0)114 263 4266

info@davidvillagelighting.co.uk

www.davidvillagelighting.co.uk