

**louis poulsen**

# Louis Poulsen PH 2/1 Pendant

LA8551

SOURCE: <https://www.davidvillagelighting.co.uk/product/Louis-Poulsen-PH-21-Pendant/5823>



## PRODUCT DESCRIPTION

**Designer:** Poul Henningsen

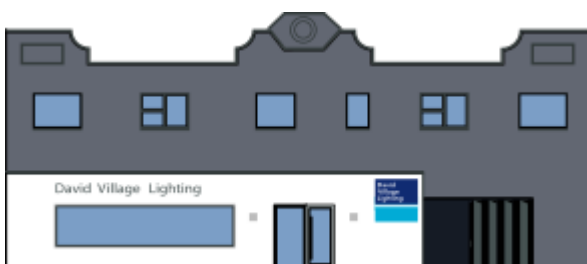
### Louis Poulsen PH 2/1 Pendant Light

The Louis Poulsen PH 2/1 Pendant originates from a three lampshade design by the renowned Poul Henningsen back in 1925-1926. He sought to create a light that could evenly distribute the light whilst creating soft shadows and being glare-free. Working with Louis Poulsen until his death in 1967, this spiralled lampshade structure, as seen in the PH 2/1 Pendant, has now been used in countless combinations and configurations.

This luminaire provides a lovely, warm glow that is effective in the room and will create a comfortable atmosphere. The longevity of the design makes the pendant an instant classic, being a true hallmark of vintage design that will catch the eye in your space. Available with either a brass, black or chrome finish paired with a white opal glass lampshade, you can use the pendant lamp in a wide variety of settings, alone or in multiples, for a timeless touch.

## PRODUCT SPECIFICATION

- Light Source:** 1 x Max 5W E14 LED (Excluded)
- IP Code:** 20
- Dimming:** Dimmable via mains phase dimming.
- Dimensions:** Shade: Ø20cm  
Shade Height: 14cm  
Cable Length: 300cm



**For all sales and technical enquiries, please contact:**

+44 (0)114 263 4266

info@davidvillagelighting.co.uk

www.davidvillagelighting.co.uk