

louis poulsen

Louis Poulsen PH 4/3 Table Lamp

LA8580

SOURCE: <https://www.davidvillagelighting.co.uk/product/Louis-Poulsen-PH-43-Table-Lamp/5844>



PRODUCT DESCRIPTION

Designer: Poul Henningsen

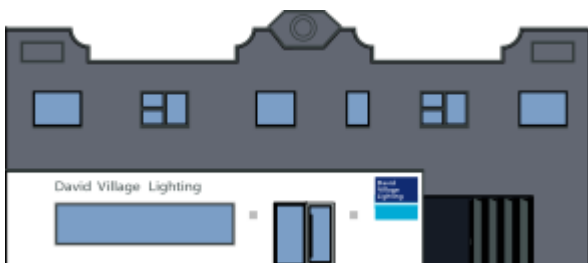
Louis Poulsen PH 4/3 Table Lamp

Designed by Poul Henningsen, the Louis Poulsen PH 4/3 Table Lamp is a beautiful and classic light that has a 3-shade system that Henningsen developed in the 1920s. Based on a logarithmic spiral, the shade conceals the light to create a soft, glare-free glow that is warming and inviting. The glass lampshade is paired with a chic chrome structure and black triangular fittings, a combination of vintage and modern elements.

The PH 4/3 Table Lamp can be used in many different settings, being useful and decorative in bedrooms, lounges, offices and more, in professional spaces and homes. The PH 4/3 can be used on tables, shelves, side tables and desks to add a timeless finishing touch to your interior.

PRODUCT SPECIFICATION

- Light Source:** 1 x Max 11W E27 LED (Excluded)
- IP Code:** 20
- Dimming:** In-line on/off switch included on cable.
- Dimensions:** Shade: Ø45cm
Height: 54cm
Base: Ø21cm
Cable Length: 290cm



For all sales and technical enquiries, please contact:

+44 (0)114 263 4266

info@davidvillagelighting.co.uk

www.davidvillagelighting.co.uk